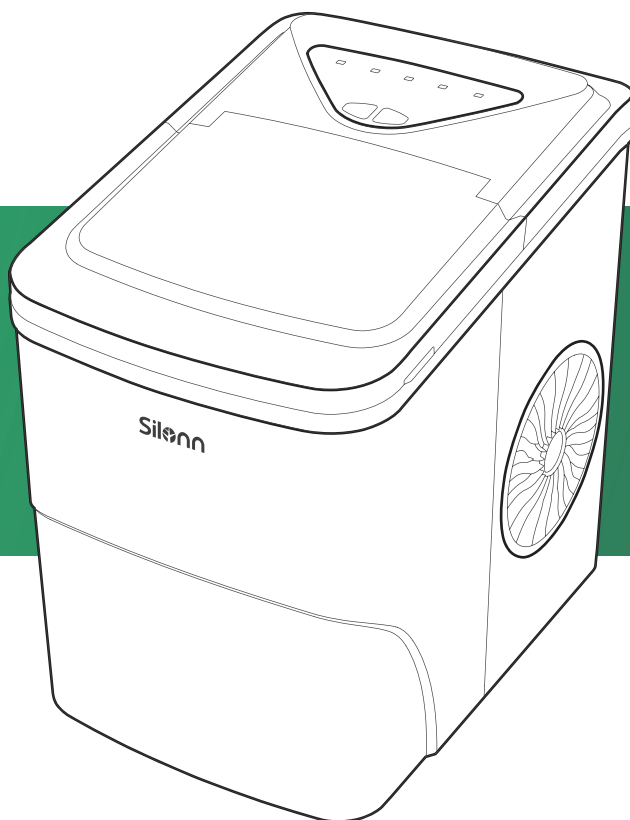




# Portable Automatic Ice Maker

Instruction Manual

SLIM01W/SLIM01B



# PAGE CONTENT

IMPORTANT SAFETY INFORMATION .....	01
PRODUCT INTRODUCTION .....	03
CONTROL PANEL INTRODUCTION .....	04
USING YOUR ICE MAKERL .....	05
CLEANING AND MAINTENANCE .....	07
PRODUCT SPECIFICATIONS .....	08
TROUBLESHOOTING .....	09
SHORT AND LONG-TERM WARRANTY INFORMATION .....	12

# IMPORTANT SAFETY INFORMATION

To reduce the risk, follow these basic safety precautions.

## WARNING



- Before using check that the voltage power corresponds to the one shown on the appliance nameplate.



- This appliance **must be** grounded.



- Avoid the use of an extension cord because it may overheat and cause a risk of fire. However, if it is necessary to use an extension cord:

- 1) **Use only** extension cord with grounding plug.
  - 2) The marked rating of an extension cord **must be** equal to or greater than the rating of this appliance.
- **Do not** operate if any component, including the cord or plug, is damaged.
  - Unplug the unit before cleaning by hand and when not in use.



- Children or mentally/physically unable personnel are not allowed to operate the ice maker.
- **Do not** place the power cord in such a way it could be pulled on by children or cause a tripping hazard.
- Closely watch children who are near the unit when making ice.



- **Do not** use water that is micro-biologically unsafe or of unknown quality.



- **Do not** remove any safety, warning, or product information labels from the unit.



- **Do not** touch the evaporator with your hands while the ice maker is operating.

- **Do not** plug or unplug the unit with wet hands.



- The unit **must be** properly installed and located following the installation instructions before it is used. The unit is for indoor household use only.



- **Do not** store or use flammable vapors or liquids near the unit.
- **Do not** immerse any part of the unit in water.



- **Do not** attempt to disassemble, repair, modify or replace any part of the ice maker without permission.

## WARNING



### FIRE OR EXPLOSION HAZARD Flammable Refrigerant

This unit contains an isobutane refrigerant, also known as R600a, a natural gas with high environmental compatibility.

However, it is also combustible. Adhere to the warnings below to reduce the risk of injury or property damage.



1. When handling, installing and operating the unit, care should be taken to avoid damage to the refrigerant tubing.



2. Disposal of the unit under Federal and Local Regulations. Contact your local authorities for the environmentally safe disposal of your refrigerator.



3. Keep ventilation openings in the unit enclosures or the built-in structure clear of obstruction.



4. **Do not** place the unit near heat sources such as an oven.

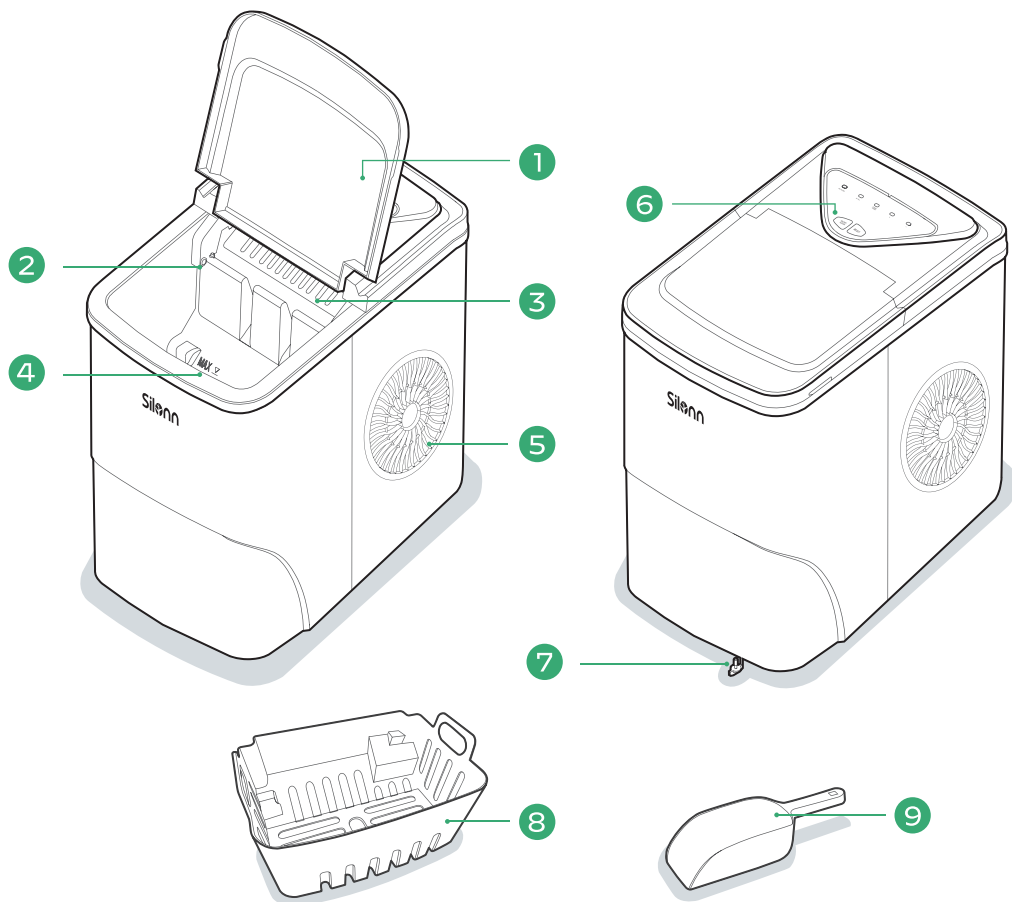


5. Ensure a minimum of three inches of clearance around the side and back walls of the unit for proper air circulation.



6. **Do not** place the unit in direct sunlight.

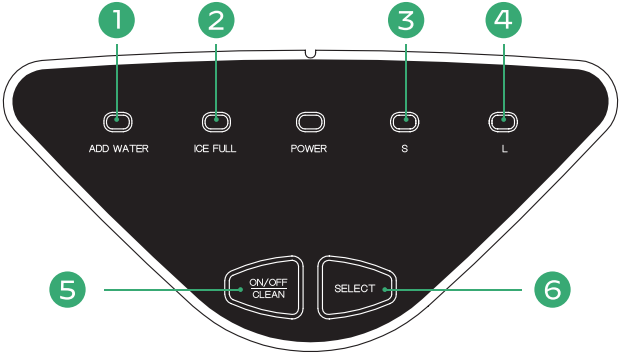
# PRODUCT INTRODUCTION



- 1.** Large Viewing Window
- 2.** Ice Full Sensor
- 3.** Ice Shovel
- 4.** Maximum Water Fill Line
- 5.** Air Exhaust Fan

- 6.** Control Panel
- 7.** Drain Plug
- 8.** Ice Basket
- 9.** Ice Scoop

# CONTROL PANEL INTRODUCTION



	Key (with indicator light)	Function
1	ADD WATER	The indicator light turns red when the water reservoir lacks water.
2	ICE FULL	The indicator light turns red when the ice basket is full.
3	S	The indicator light turns green when small ice mode is selected.
4	L	The indicator light turns green when large ice mode is selected.
5	ON/OFF CLEAN	<p>Short press the "ON/OFF/CLEAN" button to turn on the ice maker and the "POWER" indicator light turns green.</p> <p>Short press the "ON/OFF/CLEAN" button to turn off the ice maker and the "POWER" indicator flashes in green.</p> <p>When the ice maker in the status of "standby", long-press the "ON/OFF/CLEAN" button for 5 seconds and the ice maker will turn to self-cleaning mode, the indicator lights of "S" and "L" will flash in green consecutively.</p>
6	SELECT	Confirming large ice mode or small ice mode.

# USING YOUR ICE MAKER

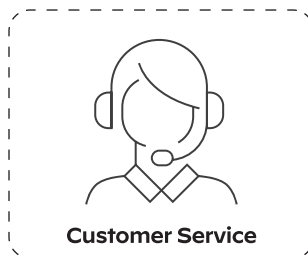
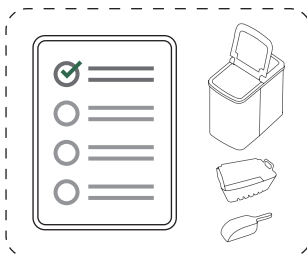
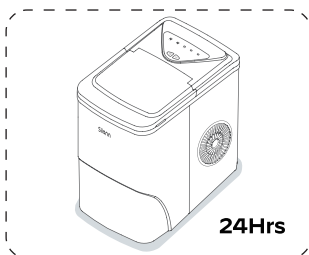
## BEFORE FIRST USE

1.

Stand Upright for 24Hrs

Check for Accessories

If Missing Contact  
Customer Service

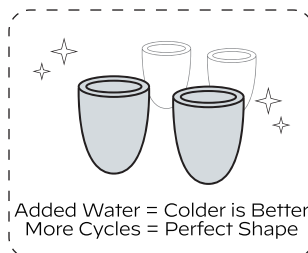
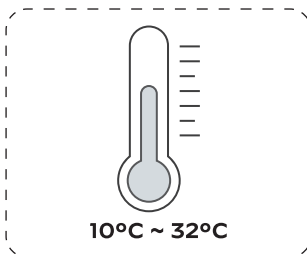
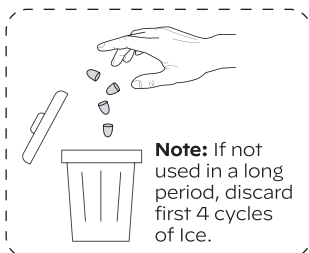


2.

Discard first 4 cycles  
of ice

Use in locations  
10°C ~ 32°C

Perfect Ice Shape

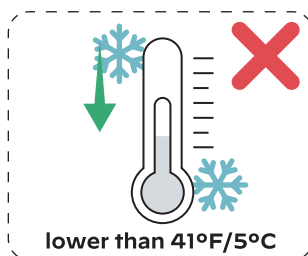
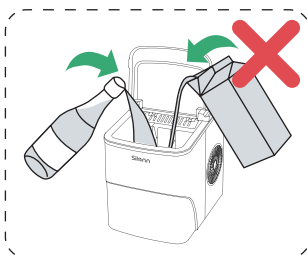
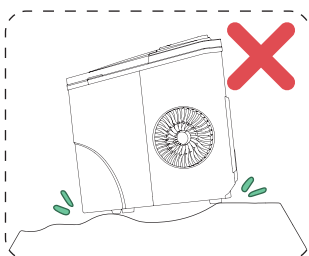


## 3. What Not To Do!

Unstable base

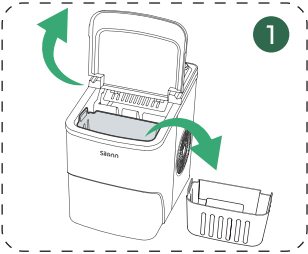
No other liquids  
(Drinking water only)

Use in temp below

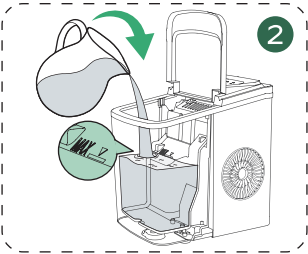


# HOW TO USE YOUR ICE MAKER

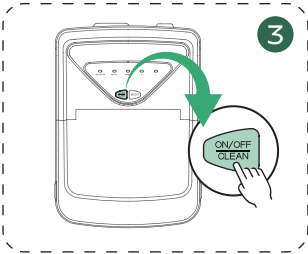
Open cover and remove basket



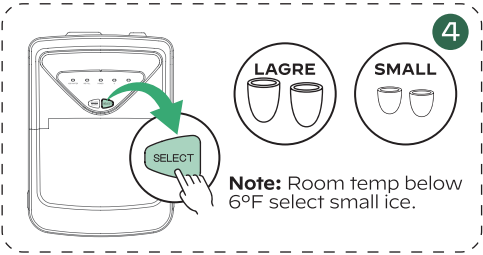
Pour water, do not exceed the "MAX" water mark



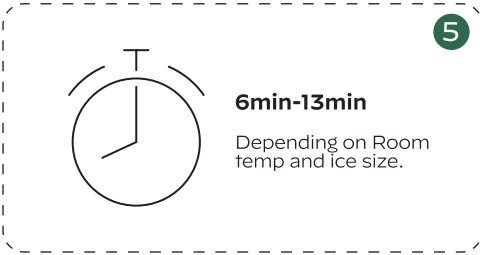
Press the "ON/OFF" button



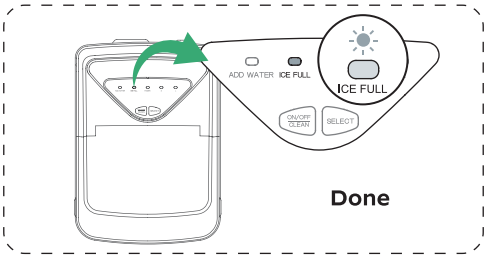
Press "Select" to choose ice cube size



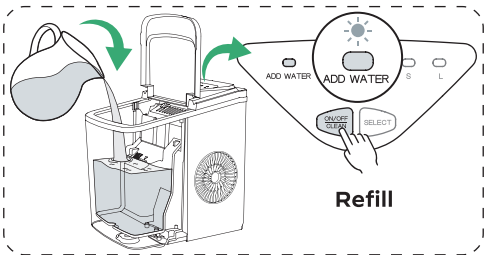
Wait 6min-13min



Ice full and ready when "Ice" indicator is on.



When "ADD WATER" indicator is red, add water and press "ON/OFF"





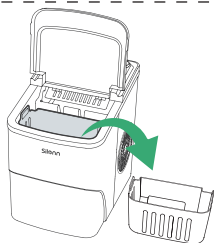
# CLEANING AND MAINTENANCE

To keep your ice tasting fresh and the unit looking great, we recommend cleaning the unit once per week.

## MANUAL CLEANING

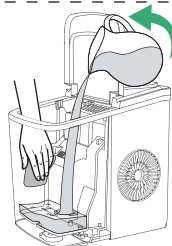
1

Remove the basket.

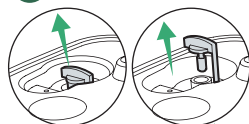


2

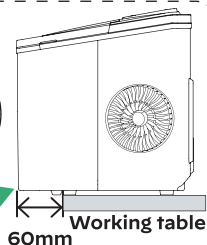
Cloth wipe with warm water and vinegar, then rinse with clean water.



3 Drain Plug



Drain excess water over sink.



4

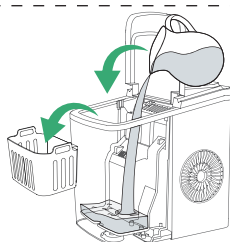
Clean exterior with cloth using mild dishwashing soap.



## SELF-CLEANING (30MIN PROCESS)

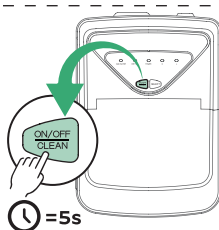
1

Remove the basket and add water.

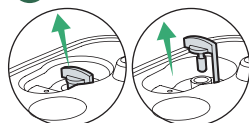


2

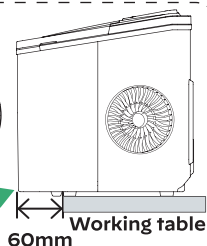
**In Standby Mode**  
Hold for 5 sec to start self-cleaning.



3 Drain Plug



Drain excess water over sink.



4

Clean exterior with cloth using mild dishwashing soap.



## **DO's & DON'T's while cleaning and maintaining**

- **Do not** use organic solvent, boiled water, detergent, strong acid and strong alkali etc. for cleaning.
- Please **empty** the water reservoir and **dry it** for storage if the unit is not used for a long time.
- When the unit is not to be used for a long duration, **drain** the water completely & dry the interior.
- **Store** in a well vented area.

## PRODUCT SPECIFICATIONS

Model	SLIM01W/SLIM01B
Voltage/Frequency	115V/60Hz
Ice-making Current	1.7A
Ice-harvest Current	2.0A
Working Power	≤160W
Water Reservoir	2L (0.53gal)
Ice Basket Capacity	1.32LBS (0.6KG)
Ice Making Rate	26LBS per day
Ice Shape	Bullet
Ice Size	Small or Large
Material	ABS, PP

## TROUBLESHOOTING

Problem	Possible Causes	Solution
<b>Poor ice-making result.</b>	Poor heat dissipation.	→ Leave a 6-inch clearance on all sides of the ice maker for ventilation.
	The water temperature is too high.	→ Fill with water temperature between 8°C and 25°C.
	The ambient temperature is too high.	→ Use the ice maker in room temperatures between 10°C and 32°C.
	Evaporator deformation	→ Please contact the customer service.
<b>Ice maker creating noise.</b>	Ice maker has not been cleaned for a long time, which will form a sticky substance around the inlet of the water pump.	→ Clean every 1 to 2 weeks, and some neutral cleaning agents (such as detergent and soapy water etc.)
	Lack of water to pump will create noise when pumping water.	→ Add more water.
	Fan or ice-maker is damaged.	→ Please contact the customer service.
	Water pump is damaged.	

Problem	Possible Causes	Solution
<b>“ICE FULL” Light is on.</b>	Ice is blocking the infra-red sensor.	→ Empty the ice basket.
	Infrared sensors do not work.	→ 1. Wipe clean the infrared sensors. 2. Contact customer service if the infrared sensors still don’t work.
<b>Ice sticks together.</b>	Making ice takes too long.	→ Stop making ice, after the ice melts restart and try again.
	The water temperature is too low.	→ Fill with water temperatures between 8°C and 25°C.
	Evaporator deformation.	→ Please contact customer service.
<b>Not making ice.</b>	Ambient or water temperature is too high.	→ Keep ambient temperature less than 32°C and fill cold water.
	Water pump is damaged.	→
	Refrigerating system leaking.	→
	Refrigerating system blocked.	→ Please contact customer service.
	The fan stopped working.	→
	The wires are loose.	→
	The gears in the motor are broken.	→

Problem	Possible Causes	Solution
<b>“ADD WATER” Light is on.</b>	Low water level or lack of water.	➔ Stop making ice, refill water, press “ON/OFF”, then restart and try again.
	Water screen blocked at the bottom of the water reservoir.	➔ Start the self cleaning function.
	Pump malfunction.	➔ Please contact customer service.
	The water detector malfunction.	

## SHORT AND LONG-TERM WARRANTY INFORMATION

### **30-DAY LIMITED WARRANTY**

To provide customers with quality shopping and user experience, we guarantee to replace or issue a full refund no questions asked within the 30day period from the date of purchase.

### **30-DAY TO 1-YEAR LIMITED WARRANTY**

After the 30-day warranty has expired, Silonn automatically activates a 1-year warranty from the date of purchase that covers product replacement.

### **30-DAY TO 1-YEAR WARRANTY LIMITATIONS**

This warranty does not cover:

- Any condition resulting from incorrect or inadequate maintenance or care.
- Damage resulting from misuse, abuse, negligence, accidents, or shipping damage.
- Dissatisfaction due to buyer's remorse.
- Normal wear and tear.
- Damages incurred after the initial transportation.

# Thank You

For choosing Silonn's ice maker!

All of us at Silonn do appreciate your ice maker purchase. We hope that you are as happy with the ice maker as we were designing and manufacturing it for you. We strive to provide you with the best quality ice makers and services in the industry.

## Questions or Problems?

 [support@silonn.com](mailto:support@silonn.com)

## Latest Information and More.

 @SilonnOfficial